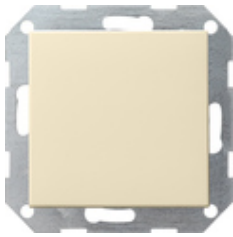











**Tastschalter 10 AX 250 V~ mit Wippe  
Kreuzschalter**



Spezifikation	Bestell-Nr.	VE	EUR/Stück o. MWSt.	PS	EAN
 Cremeweiß glänzend	0127 01	1/5	27,10	01	4010337127017
 Reinweiß glänzend	0127 03	1/5	27,10	01	4010337127031
 Reinweiß seidenmatt	0127 27	1/5	27,10	01	4010337127277
 Anthrazit	0127 28	1/5	27,63	11	4010337127284
 Farbe Alu	0127 26	1/5	30,68	11	4010337127260
 Schwarz matt	0127 005	1/5	30,68	11	4010337037989
 Grau matt	0127 015	1/5	30,68	11	4010337077169
 Edelstahl	0127 600	1/5	37,41	11	4010337021759
 Bronze	0127 603	1/5	36,66	11	4010337106067

## Technische Daten

Einbautiefe:	28 mm
Anschlussquerschnitt - für starre und flexible Leiter bis:	2,5 mm <sup>2</sup>
Nennleistung - LEDi/ CFLi:	100 W

---